

QCPL-MB-M38

SMP Connector, DC~40GHz

Features:
* Low VSWR

Applications:
* Wireless
* Radar
* Instruments
* Electronics

Electrical

Frequency:	DC~40GHz
VSWR:	1.3 max.
Impedance of Dielectric:	5000MΩ min.
Impedance of Inner Conductor:	6mΩ max.
Impedance of Outer Conductor:	2mΩ max.
Voltage Withstand:	335V DC
Impedance:	50Ω

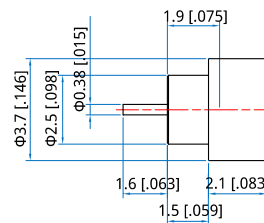
Mechanical

RF Connector:	SMP male
Detent mode:	Limited Detent
Outer Conductor:	Gold plated kovar material
Dielectric:	Glass
Inner Conductor:	Gold plated kovar material or gold plated beryllium copper

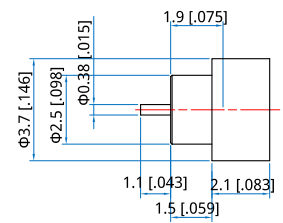
Environmental

Temperature:	-55~+165°C
--------------	------------

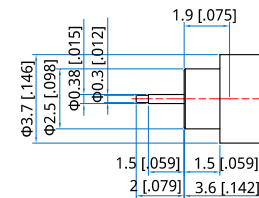
Outline Drawings



Outline A



Outline B



Outline C

Unit: mm [in]

Tolerance: ±0.2mm [±0.008in]

How To Order

[QCPL-MB-M38-01](#) - Outline A

[QCPL-MB-M38-02](#) - Outline B

[QCPL-MB-M38-03](#) - Outline C

Customization is available upon request.